



EDITORIAL

- 4 Reflections on Retirement: The Sunset Can be Spooktacular!
Lapeña JFF

ORIGINAL ARTICLES

- 7 Computed Tomography Analysis of the Anterior Epitympanic Recess and Sinus Tympani Depths Among Filipino Adults at the De La Salle University Medical Center
Gutierrez GTL
- 12 Prevalence of and Risk Factors Associated with Methicillin-Resistant *Staphylococcus aureus* (MRSA) Carriage Among Cutting Specialties at the Ospital ng Maynila Medical Center
Monteverde MRQ, Alcira RCV
- 19 Determination of the Relationship Between Olfactory Function Threshold and Quality of Life Among Adult Filipinos with Perceived Olfactory Dysfunction
Abaya MYB, Ang-Capuno KCF, Regalado-Go JAF, Gansatao FM, Onofre-Telan RDC, Gelera JE
- 26 Clinicodemographic Profile and Treatment Outcomes of Patients with Upper Aerodigestive Tract Foreign Bodies in the Southern Philippines Medical Center: A Five-Year Retrospective Review
Tagasa, JMP, Segocio, DJD
- 31 Clinical Care Pathway Time Intervals and Tumor Progression Among Head and Neck Cancer Patients at East Avenue Medical Center Before and During the COVID-19 Pandemic
Rafanan FMJ, Alfanta EM, Instrella RPPA
- 36 Periocular Measurements Among Filipino Adult Employees of Dr. Paulino J Garcia Memorial Research and Medical Center
Alberto AFJA, Soriano RG, Aragaon MC

CASE REPORT

- 41 Mandibular Fracture in a Newborn From Birth Trauma: A Case Report
Ablay IPG, Yambot KKK, Peñaflor NAI

SURGICAL INNOVATIONS AND INSTRUMENTATION

- 44 A Prototype 3D Printed Suction Port Adapter for a Wireless Otoendoscope
Garcia MCZ, Amable JPM

FEATURED GRAND ROUNDS

- 49 Synchronous Primary Head and Neck Tumors: Follicular Thyroid Carcinoma and Squamous Cell Carcinoma of The Tonsil
Maristela PB, Cruz ETS

FROM THE VIEWBOX

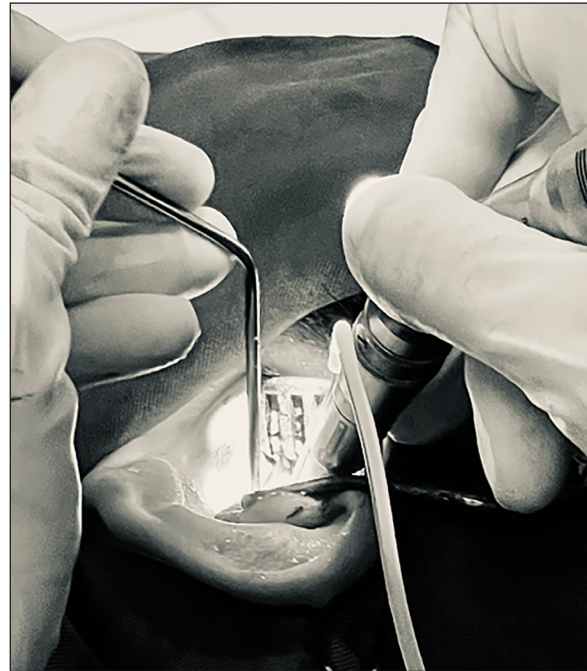
- 53 Congenital Unilateral Hearing Loss from Cochlear Nerve Canal Stenosis
Yang NW

UNDER THE MICROSCOPE

- 55 Warthin-like Variant of Mucoepidermoid Carcinoma of the Parotid Gland
Curso KAJ, Reyes JCB, Rivera JP, Carnate JM

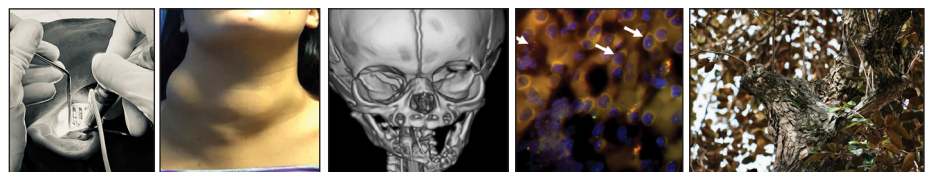
CAPTIONS

- 58 DokNet's World
Billones WU



- Reflections on Retirement: The Sunset Can be Spooktacular!
- Computed Tomography Analysis of the Anterior Epitympanic Recess and Sinus Tympani Depths Among Filipino Adults at the De La Salle University Medical Center
- Prevalence of and Risk Factors Associated with Methicillin-Resistant *Staphylococcus aureus* (MRSA) Carriage Among Cutting Specialties at the Ospital ng Maynila Medical Center
- Determination of the Relationship Between Olfactory Function Threshold and Quality of Life Among Adult Filipinos with Perceived Olfactory Dysfunction
- Clinicodemographic Profile and Treatment Outcomes of Patients with Upper Aerodigestive Tract Foreign Bodies in the Southern Philippines Medical Center: A Five-Year Retrospective Review
- Clinical Care Pathway Time Intervals and Tumor Progression Among Head and Neck Cancer Patients at East Avenue Medical Center Before and During the COVID-19 Pandemic
- Periocular Measurements Among Filipino Adult Employees of Dr. Paulino J Garcia Memorial Research and Medical Center
- Mandibular Fracture in a Newborn From Birth Trauma: A Case Report
- A Prototype 3D Printed Suction Port Adapter for a Wireless Otoendoscope
- Synchronous Primary Head and Neck Tumors: Follicular Thyroid Carcinoma and Squamous Cell Carcinoma of The Tonsil
- Congenital Unilateral Hearing Loss from Cochlear Nerve Canal Stenosis
- Warthin-like Variant of Mucoepidermoid Carcinoma of the Parotid Gland
- DokNet's World

COVER IMAGES



"Find joy in the little things, it's all part of the role you play"
iPhone 12 ProMax
By Frederick Mars B. Untalan, MD

"Grade 3 intrathoracic goiter"
Samsung S22 ultra
By Kevin Michael L. Mendoza, MD, MPM

"Mandibular Fracture in a Newborn From Birth Trauma"
3D CT Scan
By Kathleen Kay K. Yambot, MD

"Fluorescence in situ hybridization (FISH) with dual-color break-apart probes of a Warthin-like variant of mucoepidermoid carcinoma showing MAML2 gene rearrangement"
1000X magnification
By Jose M. Carnate, Jr., MD

"Tree Bark"
Fujifilm X-T5
By Neil Louis L. Apale, MD